

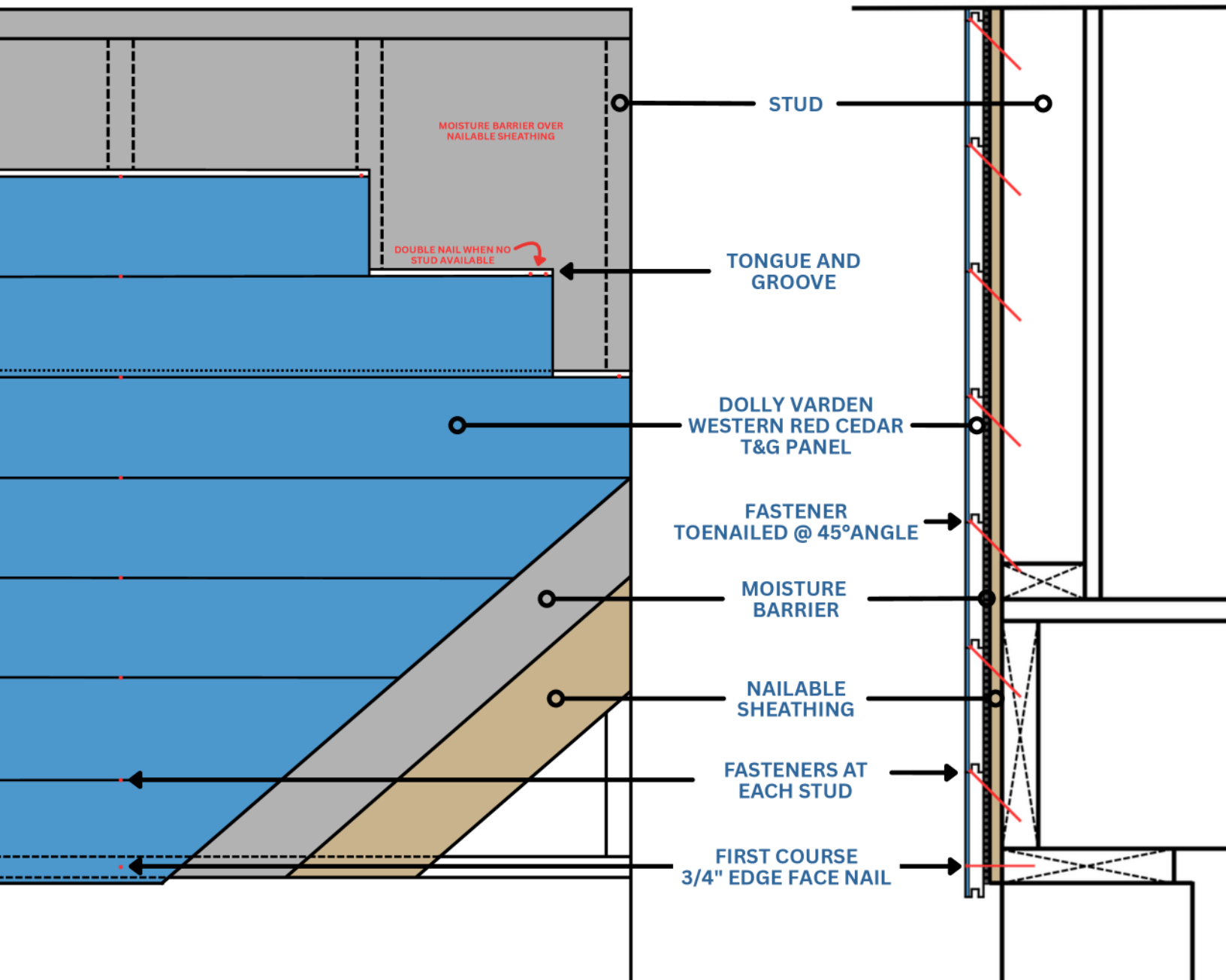
Dolly Varden® T&G Panel

Installation guide for 6" and 4" Exposures



Product Description

Dolly Varden Clear Vertical Grain Western Red Cedar T&G Paneling is a reinforced system bonding to an exterior-grade backer, creating a stronger and more stable panel than solid wood. The result is genuine cedar paneling that installs faster and cleaner than traditional materials. Delivering refined, natural beauty with lasting strength and performance.



General

Dolly Varden T&G may be used for exterior siding, under eave soffits, ceilings, and interior paneling. The product may be applied over solid nailable sheathing, over insulation board, and direct to stud. The paneling does not provide shear value.

Fasteners

Shakertown recommends using a 7d ring-shanked siding nail or ¾" crown staple that will penetrate through the sheathing and into the framing a minimum of 1". Longer fasteners will be required if attaching over foam insulation board or rain screen systems. Special applications or high wind loads may require optional fasteners. Pneumatic nailing is permitted, but care should be taken to assure the head is flush with the panel.

Corners

Corners used should be a minimum ¾" thick, matching or exceeding the thickness of the Dolly Varden T&G. Inside corner detail may be a cedar trim board, or the T&G panels may be butted or mitered to each other. Outside corners may be corner boards or the siding may be mitered.

End or Edge Cuts

Cut ends or edges should be sealed when used for exterior applications.

Staining

Dolly Varden T&G is available natural or pre-finished. Material may also be pre-finished on the job site.

Weather Barrier

Exterior sidewall application requires a suitable weather-resistive barrier, such as type 15 felt or other, in accordance with local code requirements. Use a 2-inch headlap and a 6-inch side lap, working up from the ground level.

Level Line

Establish a level line around the building. Use a transit, water level, or laser. Mark the level line about four feet off the ground, or other convenient height. Then simply measure down to a position where you will begin the first row. This will help you maintain level rows around the building. Note: Keep siding a minimum 6" from ground level.

Flashing

Proper flashing and caulking are essential for exterior applications. Keep the bottom edge of the siding a minimum 1/4" above flashing ledge. At roof junctures, siding should be a minimum 2" above the roofing material. Refer to your local building code for stricter guidelines.

Alignment

Nail a corner board in place, making sure it is square and plumb, to assist in proper alignment of siding. For horizontal installation, the tongue must point upward, and the groove of subsequent rows will face down, fitting over the tongue of the lower row.

Nailing

The T&G is attached by toe-nailing through the tongue at a 45-degree angle. Nail each course a maximum of 16" on center, through the sheathing and a minimum 1" into the studs.

First Row

The first row of material will require face nailing 3/4" from the bottom edge, as well as toe-nailing through the tongue on the top. Allow 1/8" spacing where siding butts against doors, windows, and corners, and caulk these joints with non-hardening caulking compound.

Subsequent Rows

Each row of panels will fit into the tongue of the panel below with the groove facing down. End joints should not be in direct alignment from one row to the next. Offset them a minimum of 48" in adjacent courses and 24" on alternate courses for the best appearance.

Cutting

When cutting using a circular saw, make sure cuts are square. Use a good quality blade to eliminate splintering. Seal the cut ends.

Top Course

Chances are you'll have to rip the last siding course to fit. The top row will have to be face-nailed, or a trim board can be attached to cover the siding nails.

Vertical Installation

When installing the Dolly Varden T&G vertically on the wall, place fasteners every 12" to 16". When cutting joints a scarf cut of 30 degrees or more is recommended, with the upper piece overlapping the lower piece of siding.

California WUI Installation

Siding: All butt joints must meet on studs.

Under Eave Soffits: Material may be applied direct to soffit joists/rafters. All butt joints must meet on joists/rafters.

Fire Ratings

- WUI Walls: ASTM E2707 / WUI 12-7A-1 over OSB sheathing.
- WUI Soffits: ASTM E2957 / WUI 12-7A-3 direct to trusses or joists.
- Flame Spread: ASTM E84 Class "A".
- Meets International Building Code Section 15-1.1, Table 721.1(2) for one-hour fire-rated assemblies.



SHAKERTOWN.COM

If you have any questions regarding this product or other Shakertown materials, please contact us toll-free at **1-800-426-8970**

SHAKERTOWN® CORP.

P.O. Box 400 · 1200 Kerron Street · Winlock, WA 98596

www.shakertown.com