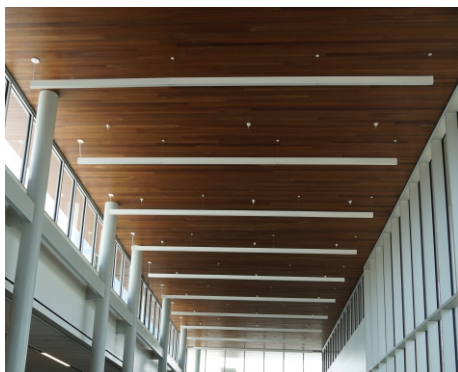




Reinforced T&G Paneling

■ Tough ■ Trusted ■ Timeless ■

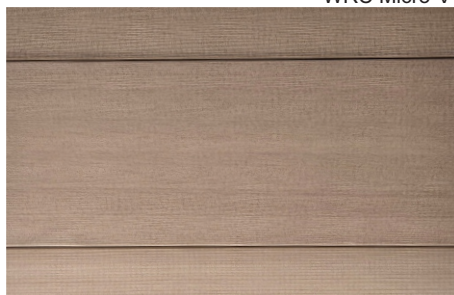




Reinforced T&G Paneling



WRC Fine Line



WRC Micro-V

Face: Western Red Cedar Clear Vertical Grain
Patterns: Micro-V Joint (aka Eased Edge)
 Fine Line (aka Nickel Gap)
Widths: 6" nominal, 5-1/4" face
 4" nominal, 3-1/4" face
Lengths: 4' to 20' mixed lengths
Thickness: 1" nominal (11/16")
Conversion Factor: 6" = 1.14 : 4" = 1.23

Dolly Varden is a classic tongue & grooved Western Red Cedar Paneling that uses Shakertown's 70 years of experience to bond cedar to exterior backing. This system provides you a stronger, more durable reinforced paneling with qualities not found in solid or engineered cedar.

Composition and Materials: Dolly Varden T&G panels are composed of genuine Western Red Cedar, Hemlock or Fir bonded with exterior adhesives (under pressure) into an exclusive 6-ply reinforced panel. The bonding method of full surface gluing meets the weather test and other requirements for exterior siding as specified under U.S. PS 1-22. Insulation values up to R 1.65 are superior to other siding products.

Finishes: Surface of natural Western Red Cedar, Hemlock or Fir. Products may be sealed or stained in the field, or factory pre-finished. Other species are available as special order.

Basic Uses: For exterior paneling on walls or soffits. For interior walls or ceilings.

Limitations: May not be used as a substitute for shear panel, although may be used over shear panels.

Nails: Use of proper nails is important. For exterior applications use a non-corrosive fastener; stainless steel, hot-dipped galvanized or aluminum. Fasteners must be of sufficient length to penetrate into nailable wood, a minimum of 1-1/4". A stainless 6d splitless siding nail is preferred.

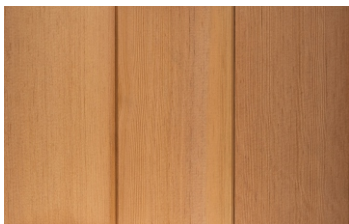
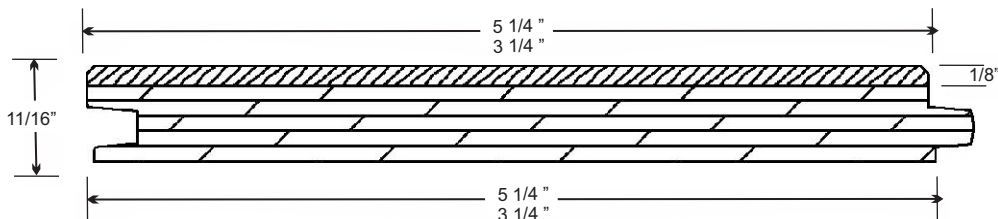
Fire Ratings:

Walls: ASTM E2707 & WUI 12-7A-1 over minimum OSB sheathing: #8160-2032-0003.

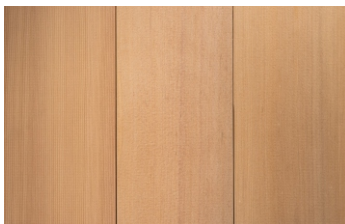
Soffits: ASTM E2957 & WUI 12-7A-3 direct to trusses/joists: #8160-2032-0004.

1-Hour: When installed per International Building Code, Section 15-1.1 of Table 721.1

Flame Spread: ASTM E84 class "A"



Clear VG Fir



Clear VG Hemlock

Shakertown
 1200 Kerron Street
 Winlock, WA 98596

800-426-8970

www.Shakertown.com

Hemlock and Fir are great options for soffits and interiors!